



ORGAN MOUNTAIN VIEWS

VOL. XXII, Issue 10

December, 2017



Holiday High Tea

Double Eagle Restaurant
2355 Calle Guadalup, Mesilla NM
Saturday, December 9
2 - 4 p.m.

Join us for a lovely High Tea featuring finger sandwiches, scones, fruit, and pastries, in addition to a variety of teas and coffee.

Cash bar will also be available.

Cost: \$20 (includes gratuity)

AAUW members only - space is limited

Please RSVP by Friday, Dec 1 to Mimi Roddy, 4845 Tobosa Rd.,
Las Cruces, NM 88011 with your payment in cash
or a check written to AAUW-LC

Questions? Contact Londa Seiffert at 303-631-4177
or Julia Bruner at 575-522-1685

In This Issue

Holiday
Community
Giving Project

From Our Co-
Presidents

Interest
Groups

Farewell,
Donna Rea

All Above
Board

November
Branch
Meeting
Photos

Of Note

Quick Links
AAUW-LC
website

AAUW-NM
website

AAUW
National
website

AAUW - LC 2017 Holiday Community Giving

This year we are asking our AAUW members to donate to Sierra Middle

∞∞∞∞
To send the



School's "Holiday Gift Shop for Students."

The gift shop is set up with new and gently used items for all age groups, so that students selected by the counselors based on need can "shop" for gifts for their family, at no cost.

They would appreciate any new or gently used item(s), preferably not clothing, that AAUW members can donate. Items most needed last year were those for older teenage boys and men, i.e., ball caps, sports logo shirts, small tools, men's

cologne or toiletries, and packages of "munchies." Also needed are items for older teenage girls and women, i.e., scarves, jewelry, lotions, soaps, perfumes, picture frames, were in short supply, and of course, books, toys, and games for all ages. Unsold items will be donated to the Mesilla Valley Community of Hope.

You can bring your donation(s) to the Holiday party on Dec. 9. Also on Wednesday, Dec. 6, Julia Bruner and Londa Seiffert will be in the Peace Lutheran Church parking lot from 2-3 p.m to receive items there. OR you can call Londa (308-631-4177) or Julia (575-522-1685) with questions or to make other arrangements.

The counselors could also use help "minding the store," which includes helping the kids shop and wrapping the gifts. The shop will be open at Sierra Middle School Dec. 11 - 15 from 9 am -3:30 pm. Contact Londa or Julia if you can help.



Leadership and Friendship forged a strong working partnership between AAUW-LC Co-Presidents Beverly Chambers and Donna Rea. Donna has moved with her husband Dave to Arizona. It's up to all of us to step up now to lend a hand to Beverly as she leads us into 2018!

Organ
Mountain
Views to a
friend,
click on
the Forward
this Email
link at the
bottom of
this
newsletter

∞ ∞ ∞ ∞

Upcoming General Meetings & Events

HOLIDAY TEA
Saturday, Dec 9
2 - 4 pm
Double Eagle
Restaurant,
Mesilla
**SEE YOU
THERE!**

Monday, Jan 8
AAUW-LC Board
9 am
Good Samaritan
Conference
Room

Sat., Jan 13
General Meeting
10 am
Tour Burrell
College of
Osteopathic
Medicine

**New to the
OMV?**

**Join Our
Mailing
List**

**CLICK
HERE!**

From our Co-President Beverly Chambers

The start of the 2018 New Year will be very exciting with the addition of a **NEW Co-Sponsored Outreach program with the Las Cruces Soroptimist International organization**. The Soroptimist have for over five years supported AAUW-LC's Girls Can! with financial donations and volunteering. The AAUW-LC Board of Directors decided it was time to return the support with a donation of \$300 for their program. For more information, click on their website link below:

[LC Soroptimist Dream It, Be It](#)

"Dream It, Be It: Career Support for Girls" on Jan. 20, 2018 will be a free, day-long, conference for high school young ladies at Doña Ana Community College-East Mesa Campus. "Dream it, Be It" curriculum is designed to teach the tools to overcome obstacles in their future career paths and achieve their goals. Las Cruces High School, Centennial High School and Rio Grande Preparatory Institute are sending 100 young women to this year's conference. Some AAUW-LC members have already signed up to volunteer. If you are interested in this great volunteering opportunity, please contact Londa Seiffert at londarenea@gmail.com or Julia Bruner at julesnewmexico@gmail.com.

Another large step, the AAUW-LC Board of Directors voted "Yes" on our branch beginning the process toward becoming a 501(c)(3). What does this mean? Your donations and any business donations to the new entity are fully tax deductible. This allows our fundraisers to approach corporations which only donate to tax deductible organizations. Our hopes are that this will increase the donations we receive to provide funding to scholarships and programs.

Best Regards,

Beverly Chambers
AAUW-LC, co-president

Congratulations to Joy Goldbaum - New Las Cruces Municipal Judge!

AAUW-LC branch member **Joy Goldbaum** captured 51% of the vote among three candidates in the recent election for Municipal Court Judge in Las Cruces.



A private practice attorney in criminal justice and family law, Joy served as leader of a Law Workshop at the 2017 Girls Can! At our October branch general meeting, she shared her desire to enact a Homeless Court program at the Mesilla Valley Community of Hope.

We look forward to her work on behalf of our community, and we are proud to have her among our branch membership.

INTEREST GROUPS

Anything Goes Book Group and Anything Goes Fiction Group

Both Anything Goes and Anything Goes Fiction will meet for a holiday gathering and book selection on **Monday, Dec. 11 at 11:30 am** at the home of Shirley Armstrong. Please let Shirley know if you plan to attend. shirmike7@msn.com. For more information, contact Julia Bruner at julesnewmexico@gmail.com or at 522-1685.

Daytime & Evening Bridge

The AAUW daytime bridge group meets on the 2nd Thursday of each month at 1 pm to approximately 4 pm.

14 Dec.	Jo Bloom
11 Jan, 2018	TBA

The AAUW evening bridge group meets on the 4th Tuesday of each month (except December) at 7:15 pm.

23 Jan. 2018	TBA
--------------	-----

Contact Carol Ann Council 649-8122 or kk-ca_council@msn.com

Mahjong

Contact Rita Worrell for information: ritaworrell@gmail.com.

Great Decisions will resume meeting on **Jan. 15, 2018**. Contact Marsha Ogden regarding topics for 2018: marshaogden@yahoo.com.

Dining Out will resume in January 2018.

Going Places

Reservations have already closed for the Dec. 7 Pelam House luncheon. More interesting and exciting branch outings will be scheduled for 2018 - look for them in future editions of the OMV.

Board Members and Friends Bid Farewell to Co-President Donna Rea





All Above Board

Board meetings are open to all members. The Board will not meet in December but will reconvene in the Conference Room of Good Samaritan (downstairs) on Monday, Jan. 8, with social conversation at 9 am and the business meeting starting at 9:30 am.

MEMBERSHIP

We are happy to welcome our newest members **Marianne B. Barnes, Sue Ann Collins, Patricia Spivey, Lynne K. Lord and Christine Long.**

Can You Put AAUW LC on Facebook?

The Las Cruces branch is looking for a volunteer to start and monitor a Facebook page for our organization. This is a great way to become involved and expose our organization to the public and social media. Please contact Beverly Chambers at flagbab@mac.com if you can help.

GIRLS CAN! Report

Committees are gearing up for the best ever Girls Can! on March 10, 2018 at DACC East Mesa Campus. Thanks go to Becca Galves and the New Mexico Network for Women in Science and Engineering (NMNWSE) for letting us use their 501(c)(3) tax status, donations to Girls Can! 2018 can now be tax-deductible. Just go to our website, click on Girls Can! and make your donation online. It couldn't be easier. Happy Holidays! - Ann McCullough

WOMEN GRADUATES-USA

Beginning with the International Day for the Elimination of Violence Against Women on 25 November and culminating with Human Rights Day on 10 December, the **16 Days of Activism Against Gender-Based Violence (GBV) Campaign** is an annual movement for the international community to center its efforts on reducing and eliminating violence against women and girls around the world. Since 1991, the 16 Days Campaign has united the voices of millions of girls and women to raise GBV awareness, eradicate GBV in all forms and demand equal protection for girls and women from GBV.

This year the theme, "Together We Can End GBV in Education!," is relevant to GWI [Graduate Women International] and like-missioned NGOs as the campaign is focused on intense awareness-raising in the human rights framework, to increase awareness of and advocate for the elimination of all forms of gender-based violence in education.

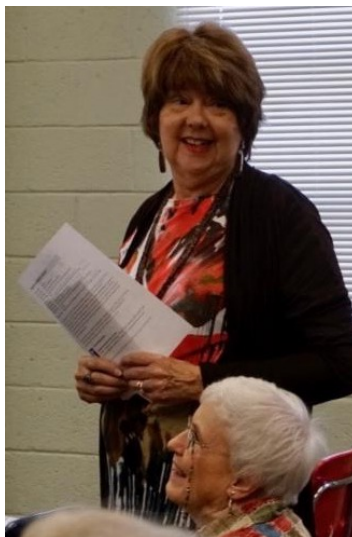
November Branch Meeting Explored the Topic of Human Trafficking



November's AAUW-LC branch meeting drew a large crowd to hear a presentation by **FBI Special Agent Ida D'Antonio-Hangen**. Her topic, Human Trafficking, was both timely and compelling. Its relationship to immigration is especially relevant to our border location. D'Antonio-Hangen shared current research on human trafficking that is part of her thesis work toward her Masters

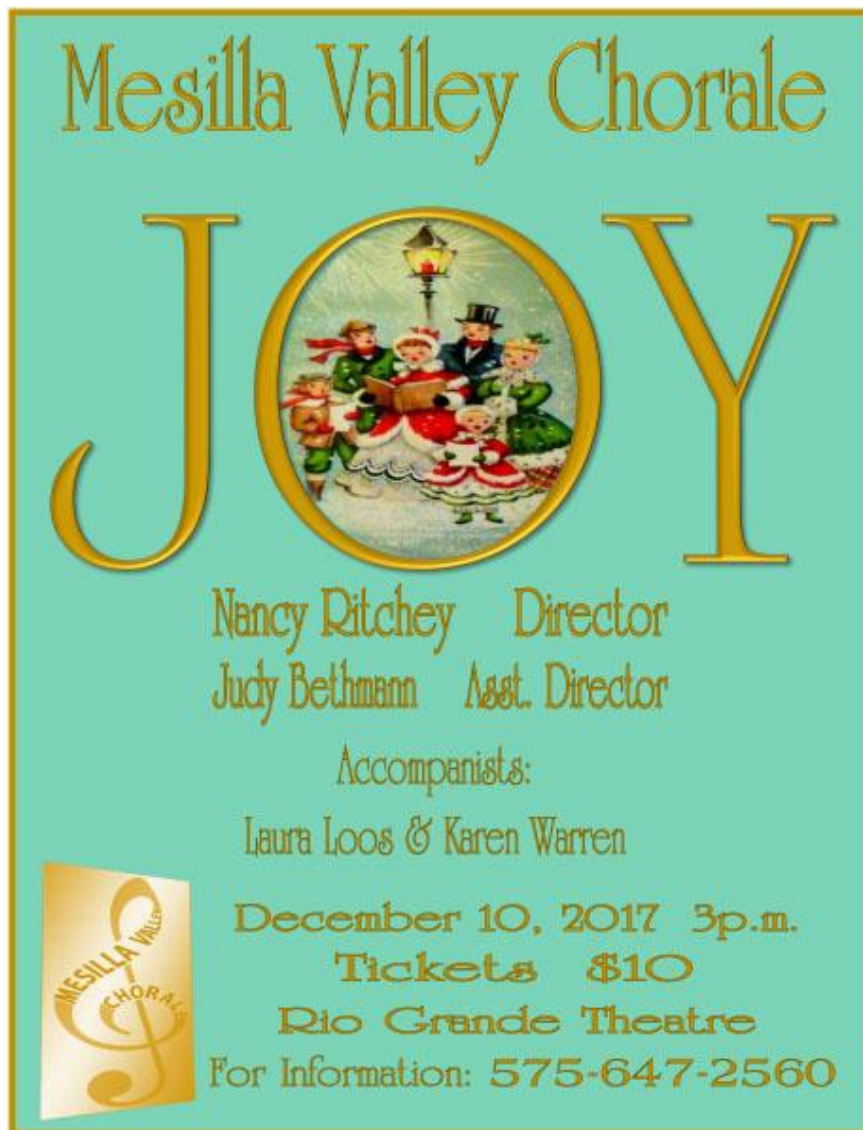
Degree at NMSU.

It was also a meeting where we welcomed a number of new members and guests, some of whom are pictured here.



AAUW-LC members Susan DeMar and Bonnie Schranz are also members of the Mesilla Valley Chorale.

They invite you to a JOYFUL concert of holiday music
at the Rio Grande Theatre on Sunday, Dec. 10.



The poster for the Mesilla Valley Chorale's "JOY" concert features a light blue background with a gold border. At the top, "Mesilla Valley Chorale" is written in a gold, stylized font. Below this, the word "JOY" is written in large, gold, serif letters. The letter "O" is replaced by a circular illustration of a group of people in holiday attire singing and playing instruments, with a street lamp above them. Below the illustration, the names of the directors and accompanists are listed in a gold, serif font. At the bottom, the date, time, ticket price, venue, and contact information are provided in the same font. A small logo for the Mesilla Valley Chorale is located in the bottom left corner.

Mesilla Valley Chorale

JOY

Nancy Ritchey Director
Judy Bethmann Asst. Director

Accompanists:
Laura Loos & Karen Warren

December 10, 2017 3p.m.
Tickets \$10
Rio Grande Theatre
For Information: 575-647-2560

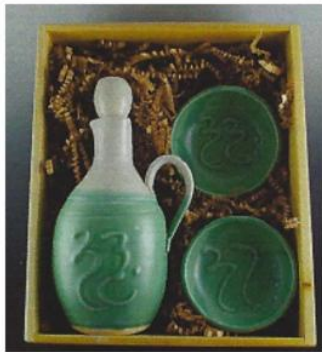
Of Note...

An interesting article appeared in The VIEW, a column in the Nov. 20, 2017 issue of Time magazine. Its title is "What happens when women reach a critical mass of influence?"

To read the article (in pdf format), click on the link below.

[The View, Time magazine 11.20.17](#)

SUPPORT OUR ADVERTISERS!



Cally Williams Pottery
 331 Capri Arc, Las Cruces, NM
 575-526-5250 callywill@hotmail.com

AAUW-LC, PO Box 6572, Las Cruces, NM 88006

[SafeUnsubscribe™ {recipient's email}](#)

[Forward this email](#) | [Update Profile](#) | [About our service provider](#)

Sent by bonnie.schranz@gmail.com in collaboration with



Try it free today